

---

**Notice to Competitors**  
As of September 17, 2018 at 7:22 AM

**Amendment to Sailing Instructions #2**

ADD:

- 1.8 Support Person Regulation 6.1 will not apply to World Sailing Coaches.
- 1.9 Support Person Regulation 1.10 is changed to: Coach boats shall be marked with a blue flag clearly displayed at all times while afloat.

CHANGE TO:

- 2.1 Notices to competitors will be posted on the official notice board located adjacent to the regatta office trailers located at the north end of the Sheboygan Yacht Club dry storage lot.

CHANGE TO:

- 7.3 The schedule time of the first warning of the first race of the day will be:
  - Hansa 303 and RS Venture fleets: 1000
  - 2.4m OD fleet 1100

CHANGE TO:

10 RACING AREAS

Appendix A shows the approximate location of the racing areas. There may be an area inside the breakwater in the case of foul weather. The racing area for each fleet will be posted before 0830 each day. If it becomes necessary to move the racing area, the RC signal boat will display Code Flag L and move to the new location.

CHANGE TO:

12.1 2.4 m OD

12.1.1 Rounding marks will be Mark-Set-Bot autonomous marks. The finish and weather mark's will be yellow, the gate mark's will be orange.

12.1.2 Substitute new mark as provided in 14.2 will be an orange inflatable mark.

12.1.3 Offset mark will be an orange ball.

12.1.4 In the event that the Mark-Set-Bots cannot be used, a mix of inflatable marks will be used.

12.2 Hansa 303

12.2.2 New marks, as provided in instruction, will be orange tetrahedrons with a black band.

12.3 RS Venture

12.3.1 Original marks will be yellow tetrahedrons. Start and finish marks will be white balls.

Delete 12.3.2

**CHANGE TO:**

13.1.1 For the 2.4m OD and Hansa 303 fleets races will be started using RRS 26 with the warning signal 5 minutes before the starting signal.

13.1.2 For the RS Venture fleet races will be started as follows - Audible Signal Racing System (***US SAILING Prescription Appendix U***):

- a) Race Signal may be made by hailing, in which case the corresponding visual signal may also be used, but not its designated sound signal.
- b) A series of short sounds may be made at any time to call attention to a hail or a visual signal.
- c) The starting sequence shall consist of the following sound signals made at the indicated times. These signals shall be timed from their commencement and shall govern.

| <b><i>Signal</i></b> | <b><i>Sound</i></b>     | <b><i>Time before start</i></b> |
|----------------------|-------------------------|---------------------------------|
| Attention            | Series of short sounds  | Before the warning              |
| Warning              | 3 long                  | 3 minutes                       |
| Preparatory          | 2 long                  | 2 minutes                       |
|                      | 1 long, 3 short         | 1 minute, 30 seconds            |
|                      | 1 long                  | 1 minute                        |
|                      | 3 short                 | 30 seconds                      |
|                      | 2 short                 | 20 seconds                      |
|                      | 1 short                 | 10 seconds                      |
|                      | 5 short, 1 second apart | 5 – 4 – 3 – 2 – 1 seconds       |
| Starting             | 1 long                  | 0                               |

d) Individual recalls shall be signaled by hailing the sail number (or other distinguishing feature) of each recalled boat. Flag X need not be displayed.

e) Failure to hear an adequate hail or sound signal shall not be grounds for redress. This changes rule 62.1.

13.2 The starting line for the 2.4m OD fleet will be between a staff displaying a orange flag on the signal boat and a staff displaying orange flag on the pin boat.

13.5 For the RS Venture Fleet, If Code Flag R is displayed on the signal boat at the start of a race, a reef in the mainsail is required.

13.6 For the RS Venture Fleet, if Code Flag W is displayed on the signal boat at the start of a race, no spinnakers/gennakers are allowed.

#### CHANGE TO:

#### 14 CHANGE OF THE NEXT LEG OF THE COURSE

14.1 For the Hansa 303 and RS Venture fleets: To change the next leg of the course, the race committee will lay a new mark (or move the finishing line) and remove the original mark as soon as practicable. When a new mark is laid the offset mark will not be used. When in subsequent change a new mark is replaced, it will be replaced by an original mark. The RC may make minor adjustments to the course without signaling per RRS 33.

14.2 For the 2.4m OD fleet:

14.2.1 If the RC signals a change in course per RRS 33, the Mark-Set-Bot will be moved into the new position. The offset mark will not be used if a course change is signaled.

14.2.2 In the event that the Mark-Set-Bot cannot be moved to the new position, the RC will lay a orange inflatable mark and signal the course change as prescribed in RRS 33 with an additional orange flag.

14.2.3 The RC may make minor adjustments to the course without signaling per RRS 33.

#### CHANGE TO:

#### 15 THE FINISH

The finishing line for the Hansa 303 and RS Venture classes will between a blue flag on the committee boat and a white ball. The finish line for the 2.4m OD will be between a staff displaying a blue flag and a Mark-Set-Bot.

CHANGE TO:

18.1 Protest forms are available at the race office, in the white tent south of the Sheboygan Youth Sailing Center. (near the measurement area)

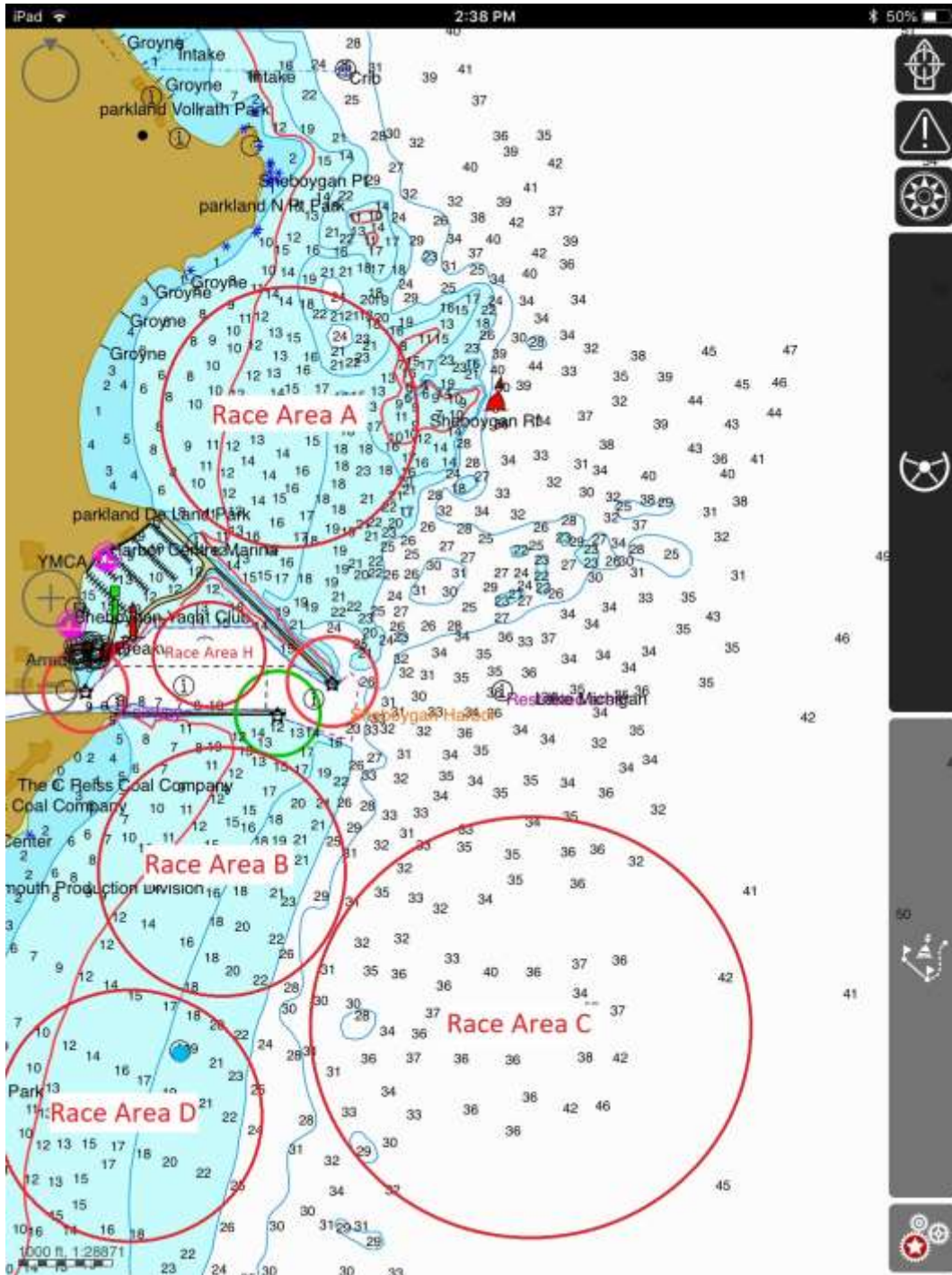
ADD:

27 RADIO COMMUNICATION

The RC may make courtesy broadcasts to competitors over VHF radio on the following channels. Hansa 303 class VHF channel 73, RS Venture 78A, 2.4M OD VHF 67. Failure to receive courtesy broadcast shall not be grounds for redress.

CHANGE TO:

Appendix A



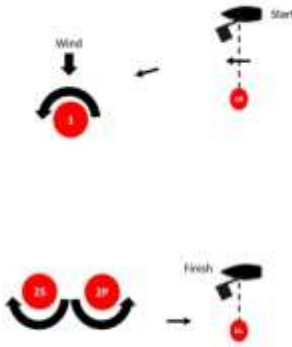
CHANGE TO:

All Courses in Appendix B have been modified

## Course A

Course A1 - Start - 1 - 2S or 2P - 1 - 2p - Finish

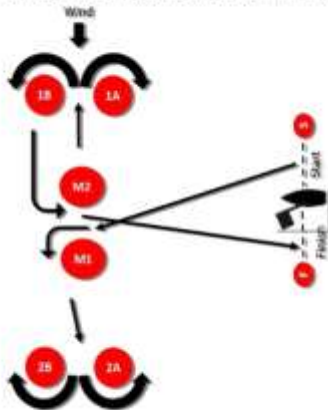
Course A2 - Start - 1 - 2S or 2P - 1 - 2S or 2p - 1 - 2P - Finish



## Course B

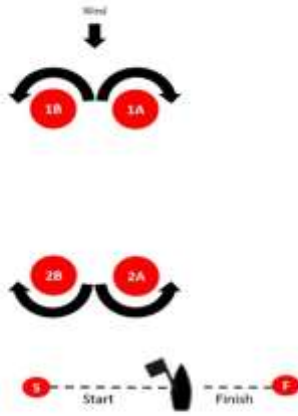
Course B1 - Start - M1 - 2A or 2B - 1A or 1B - M2 - Finish

Course B2 - Start - M1 - 2A or 2B - 1A or 1B - 2A or 2B - 1A or 1B - M2 - Finish

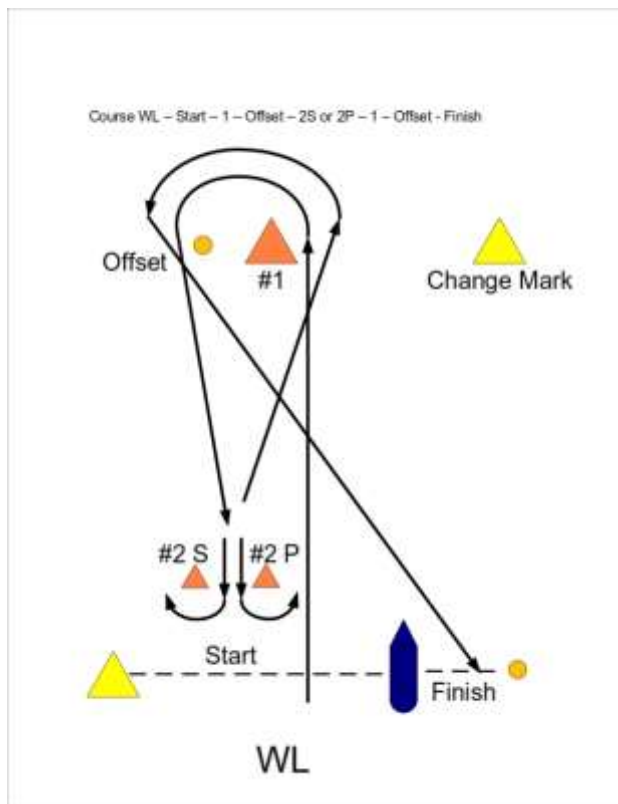


## Course C

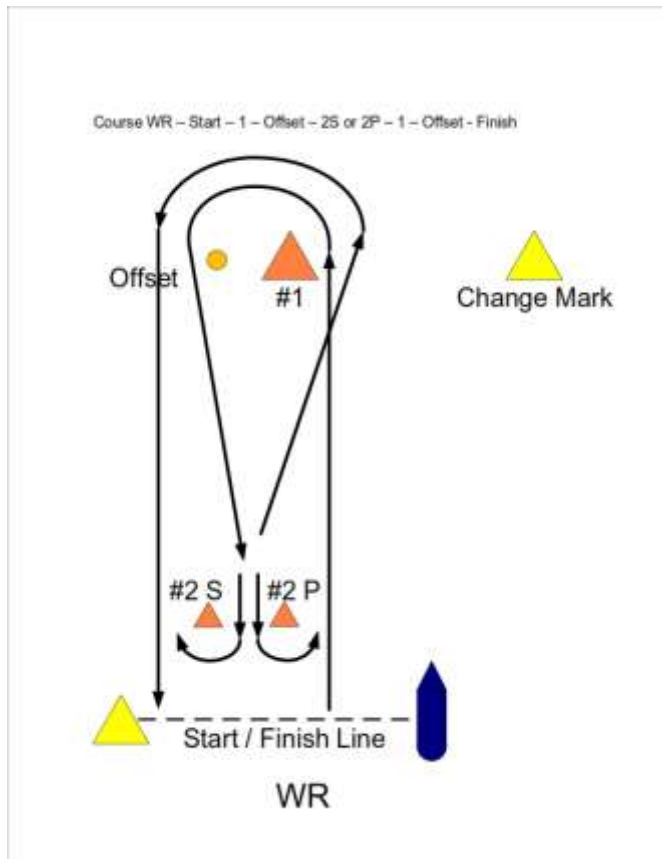
Course C1 - Start - 1A or 1B - 2A or 2B - 1A or 1B - Finish  
 Course C2 - Start - 1A or 1B - 2A or 2B - 1A or 1B - 2A or 2B - 1A or 1B - Finish



## Course WL



## Course WR



Posted by: John Strassman, Principal Race Officer

Posted time: 7:22 AM

Posted date: 17-Sep-18

This decision affects: Hansa 303 M/F  
RS Venture Connect  
2.4m OD